

Monthly Filings and Closings 2019

ALB	Ch. 7	Ch.11	Ch.12	Ch.13	2019 Total	2018 Total	Trend	Closed
Jan	31	1	1	85	118	119	-0.84%	128
Feb	26	0	1	71	98	128	-23.44%	97
Mar	35	1	0	92	128	155	-17.42%	183
Apr	28	0	0	86	114	118	-3.39%	99
May	26	0	0	82	108	138	-21.74%	170
Jun	28	0	2	90	120	138	-13.04%	173
Jul	23	0	0	96	119	137	-13.14%	128
Aug	32	0	1	121	154	167	-7.78%	81
Sep	28	1	2	112	143	143	0.00%	126
Oct	27	0	0	105	132	114	15.79%	150
Nov	23	0	2	93	118	124	-4.84%	143
Dec	21	0	0	90	111	105	5.71%	93
YTD	328	3	9	1123	1463	1586	-7.76%	1571
TOTAL	328	3	9	1123	1463	1586		

ATH	Ch. 7	Ch.11	Ch.12	Ch.13	2019 Total	2018 Total	Trend	Closed
Jan	43	0	0	75	118	84	40.48%	130
Feb	39	0	0	79	118	117	0.85%	105
Mar	57	1	2	74	134	138	-2.90%	145
Apr	69	0	0	63	132	117	12.82%	132
May	59	0	0	62	121	111	9.01%	128
Jun	50	0	0	59	109	103	5.83%	112
Jul	46	0	0	63	109	120	-9.17%	174
Aug	61	1	2	83	147	141	4.26%	121
Sep	53	0	0	65	118	117	0.85%	114
Oct	53	0	0	76	129	136	-5.15%	120
Nov	50	0	0	74	124	127	-2.36%	127
Dec	31	0	1	50	82	110	-25.45%	123
YTD	611	2	5	823	1441	1421	1.41%	1531
TOTAL	611	2	5	823	1441	1421		

MAC	Ch. 7	Ch.11	Ch.12	Ch.13	2019 Total	2018 Total	Trend	Closed
Jan	80	0	1	85	166	177	-6.21%	268
Feb	85	0	0	110	195	208	-6.25%	212
Mar	97	0	1	134	232	217	6.91%	264
Apr	84	0	0	106	190	215	-11.63%	224
May	103	0	0	139	242	205	18.05%	245
Jun	79	0	0	111	190	179	6.15%	217
Jul	71	0	0	115	186	190	-2.11%	248
Aug	79	0	1	114	194	264	-26.52%	243
Sep	81	0	1	143	225	194	15.98%	190
Oct	93	0	0	145	238	206	15.53%	230
Nov	73	0	1	117	191	243	-21.40%	208
Dec	69	1	0	101	171	176	-2.84%	213
YTD	994	1	5	1420	2420	2474	-2.18%	2762
TOTAL	994	1	5	1420	2420	2474		

MAC OFC	Ch. 7	Ch.11	Ch.12	Ch.13	2019 Total	2018 Total	Trend	Closed
Jan	154	1	2	245	402	380	5.79%	526
Feb	150	0	1	260	411	453	-9.27%	414
Mar	189	2	3	300	494	510	-3.14%	592
Apr	181	0	0	255	436	450	-3.11%	455
May	188	0	0	283	471	454	3.74%	543
Jun	157	0	2	260	419	420	-0.24%	502
Jul	140	0	0	274	414	447	-7.38%	550
Aug	172	1	4	318	495	572	-13.46%	445
Sep	162	1	3	320	486	454	7.05%	430
Oct	173	0	0	326	499	456	9.43%	500
Nov	146	0	3	284	433	494	-12.35%	478
Dec	121	1	1	241	364	391	-6.91%	429
YTD	1933	6	19	3366	5324	5481	-2.86%	5864
TOTAL	1933	6	19	3366	5324	5481		

Monthly Filings and Closings 2019

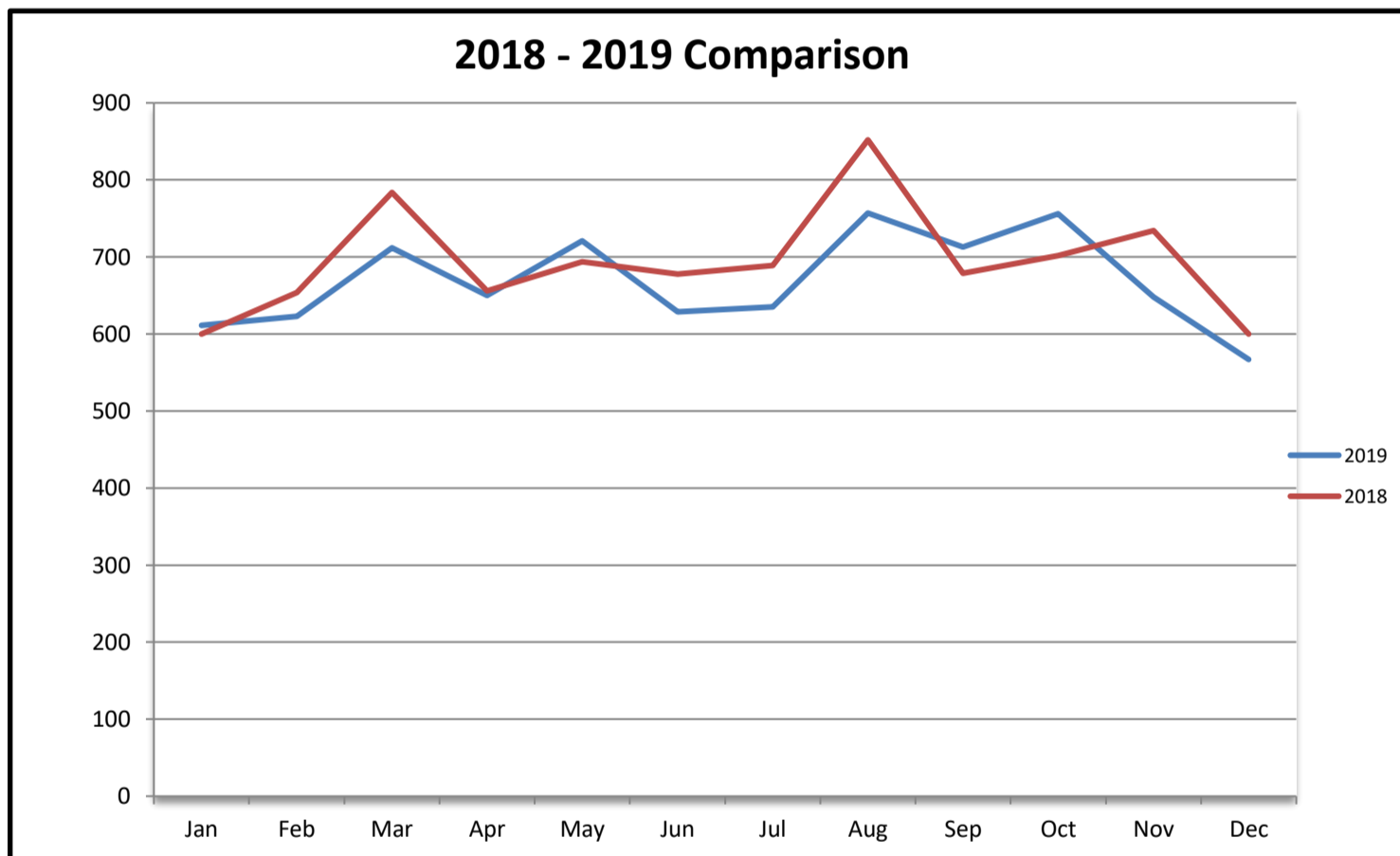
COL	Ch. 7	Ch.11	Ch.12	Ch.13	2019 Total	2018 Total	Trend	Closed
Jan	33	0	0	63	96	99	-3.03%	82
Feb	31	0	0	49	80	96	-16.67%	139
Mar	43	0	0	45	88	120	-26.67%	97
Apr	39	0	0	45	84	99	-15.15%	97
May	32	0	0	87	119	116	2.59%	99
Jun	25	0	0	56	81	116	-30.17%	94
Jul	28	0	0	74	102	112	-8.93%	104
Aug	30	1	1	73	105	117	-10.26%	103
Sep	22	0	0	73	95	97	-2.06%	106
Oct	27	0	0	71	98	105	-6.67%	94
Nov	29	0	0	66	95	110	-13.64%	76
Dec	24	0	0	71	95	91	4.40%	101
YTD	363	1	1	773	1138	1278	-10.95%	1192
TOTAL	363	1	1	773	1138	1278		

VAL	Ch. 7	Ch.11	Ch.12	Ch.13	2019 Total	2018 Total	Trend	Closed
Jan	17	0	0	96	113	121	-6.61%	104
Feb	15	0	0	117	132	105	25.71%	132
Mar	23	0	0	107	130	154	-15.58%	134
Apr	17	0	1	112	130	107	21.50%	149
May	26	0	2	103	131	124	5.65%	158
Jun	21	1	0	107	129	142	-9.15%	147
Jul	19	0	0	100	119	130	-8.46%	122
Aug	18	0	3	136	157	163	-3.68%	154
Sep	19	0	0	113	132	128	3.13%	109
Oct	39	0	0	120	159	141	12.77%	131
Nov	17	5	0	98	120	130	-7.69%	92
Dec	17	1	0	90	108	118	-8.47%	161
YTD	248	7	6	1299	1560	1563	-0.19%	1593
TOTAL	248	7	6	1299	1560	1563		

COL OFC	Ch. 7	Ch.11	Ch.12	Ch.13	2019 Total	2018 Total	Trend	Closed
Jan	50	0	0	159	209	220	-5.00%	186
Feb	46	0	0	166	212	201	5.47%	271
Mar	66	0	0	152	218	274	-20.44%	231
Apr	56	0	1	157	214	206	3.88%	246
May	58	0	2	190	250	240	4.17%	257
Jun	46	1	0	163	210	258	-18.60%	241
Jul	47	0	0	174	221	242	-8.68%	226
Aug	48	1	4	209	262	280	-6.43%	257
Sep	41	0	0	186	227	225	0.89%	215
Oct	66	0	0	191	257	246	4.47%	225
Nov	46	5	0	164	215	240	-10.42%	168
Dec	41	1	0	161	203	209	-2.87%	262
YTD	611	8	7	2072	2698	2841	-5.03%	2785
TOTAL	611	8	7	2072	2698	2841		

Monthly Filings and Closings 2019

DISTRICT	Ch. 7	Ch.11	Ch.12	Ch.13	2019 Total	2018 Total	Trend	Reopens	Closed	AP Filed	AP Closed
Jan	204	1	2	404	611	600	1.83%	3	712	11	11
Feb	196	0	1	426	623	654	-4.74%	3	685	14	9
Mar	255	2	3	452	712	784	-9.18%	10	823	6	14
Apr	237	0	1	412	650	656	-0.91%	7	701	6	13
May	246	0	2	473	721	694	3.89%	6	800	28	6
Jun	203	1	2	423	629	678	-7.23%	6	743	7	12
Jul	187	0	0	448	635	689	-7.84%	10	776	18	8
Aug	220	2	8	527	757	852	-11.15%	4	702	3	11
Sep	203	1	3	506	713	679	5.01%	6	645	9	12
Oct	239	0	0	517	756	702	7.69%	9	725	4	10
Nov	192	5	3	448	648	734	-11.72%	2	646	2	8
Dec	162	2	1	402	567	600	-5.50%	3	691	8	12
YTD	2544	14	26	5438	8022	8322	-3.60%	69	8649	116	126
TOTAL	2544	14	26	5438	8022	8322					



*District Closed total does not include case number 05-60895 that was closed in April. This former Thomasville Division case was reopened, transferred, and assigned case number 19-10262 in the Albany Division. Also does not include case number 06-60038 that was closed in August. This former Thomasville Division case was reopened, transferred, and assigned case number 19-10844 in the Albany Division.